

**DOMINO WHISKER**  
PARENTHESIS



Gormleys.



# DOMINO WHISKER

Domino Whisker's 'Parenthesis' is a curative act of preserving her own memory through intricate and intimate embroidered works. Whisker once again charts the territory between deep love and loss, amplifying the thoughts that are meant to be quiet.

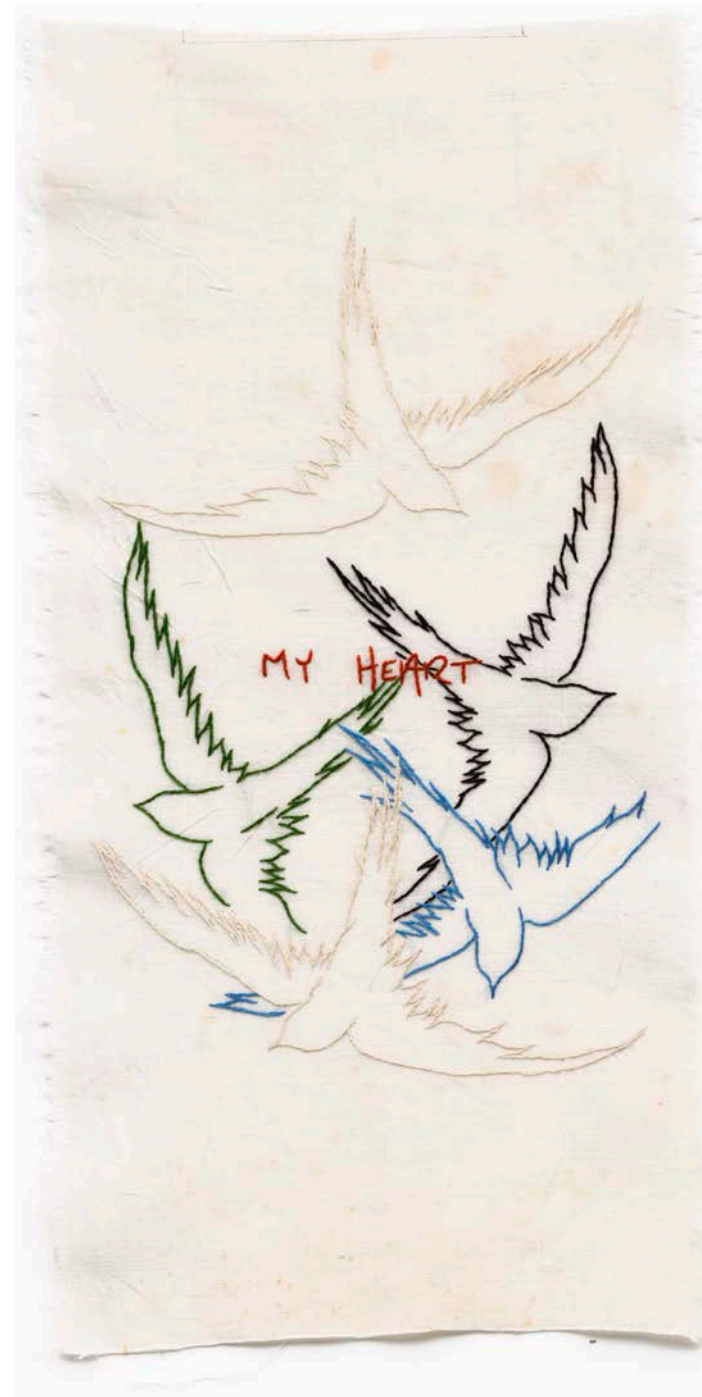
The show consists of both hand embroidered works and tapestries. Using found linen from Northern Ireland, Whisker stitches her pieces as a way of memorialising her own past while honouring the memory of others that are woven into the fabric itself.

The colours chosen for 'Parenthesis' are considered, each reflecting a different emotion. While some works give an air of calm, others amplify the fugitive effects of memory. 'Parenthesis' is a deeply emotional body of work, bracketed between two realities, life and loss.



## 'Dad's Heart'

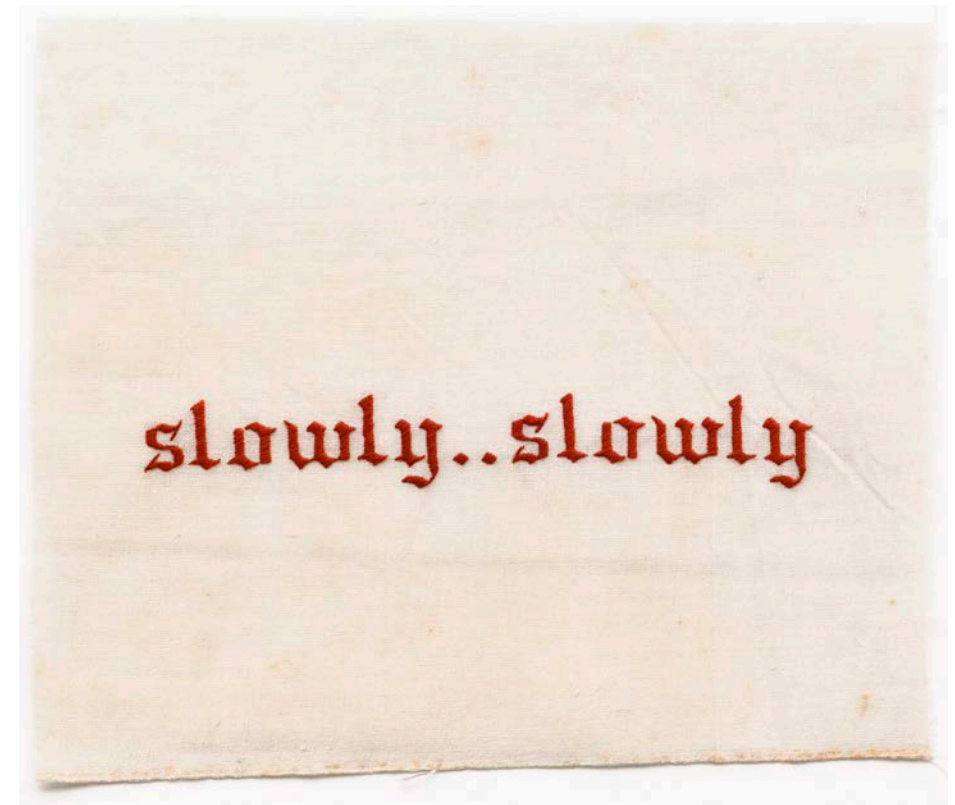
The same commotion as before, colours flying around my mind to help me decipher the good from the bad, the happy from the sad. 'My Heart' is stitched in my Fathers handwriting. His heart is my heart. There is a little piece of him in everything I do, and that is my way of keeping him alive.



**Dad's Heart**  
Hand Embroidery on Antique Linen  
55 x 35cm

## 'Slowly... Slowly'

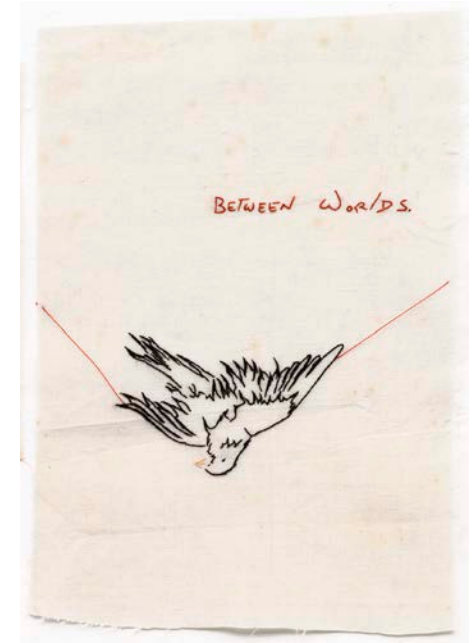
A mantra I say to myself in times of heavy emotion, or panic - to catch my breath, slow my mind and bring a sense of calm. I wanted this piece to be the first thing people see when entering the room. I want the space to feel calm and for the viewer to feel at peace.



Slowly...Slowly  
Hand Embroidery on Antique Linen  
35 x 50cm

## 'Falling' 'Between Worlds'

Two birds, living in parallel worlds yet still connect by some force. Ultimately they belong together, but are forced to exist separately. The living and the lost finding ways to communicate. The text is once again stitched in my Father's handwriting. I feel connected to him when I stitch his words and this gives my work another layer of meaning. The red line connects these two pieces and gives the birds a sense of hanging on to one another.

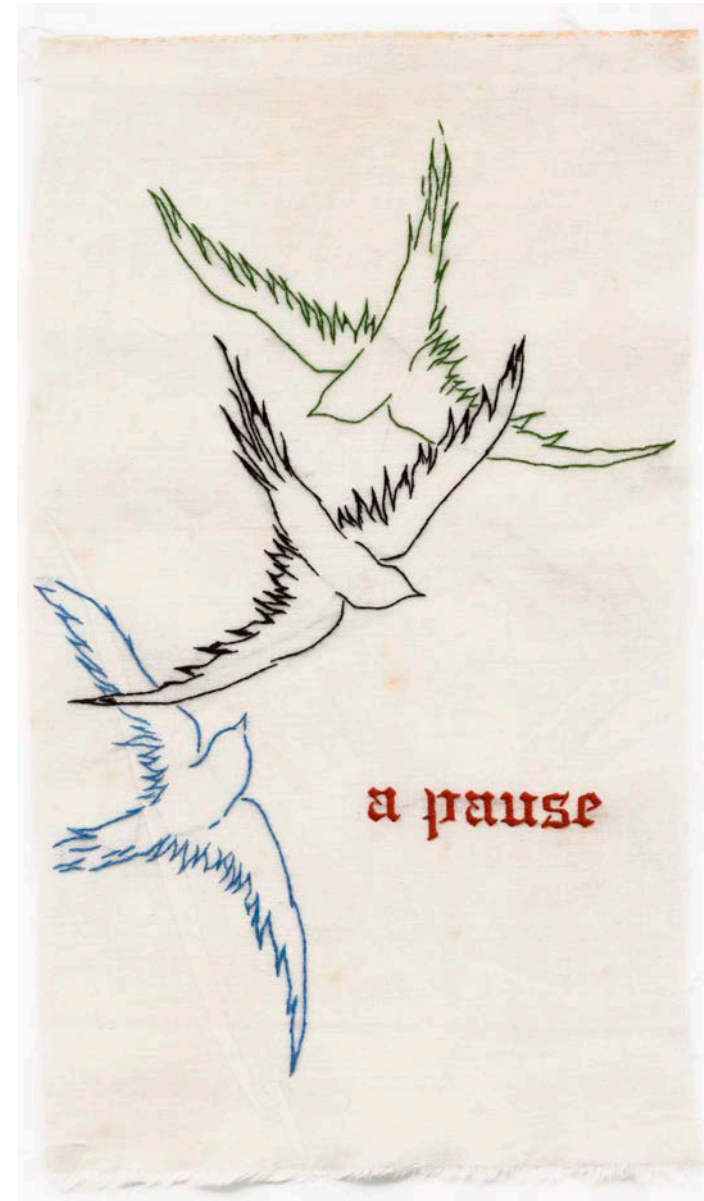


**Falling**  
Hand Embroidery on Antique Linen  
40 x 32cm

**Between Worlds**  
Hand Embroidery on Antique Linen  
40 x 32cm

## 'A Pause (for you)'

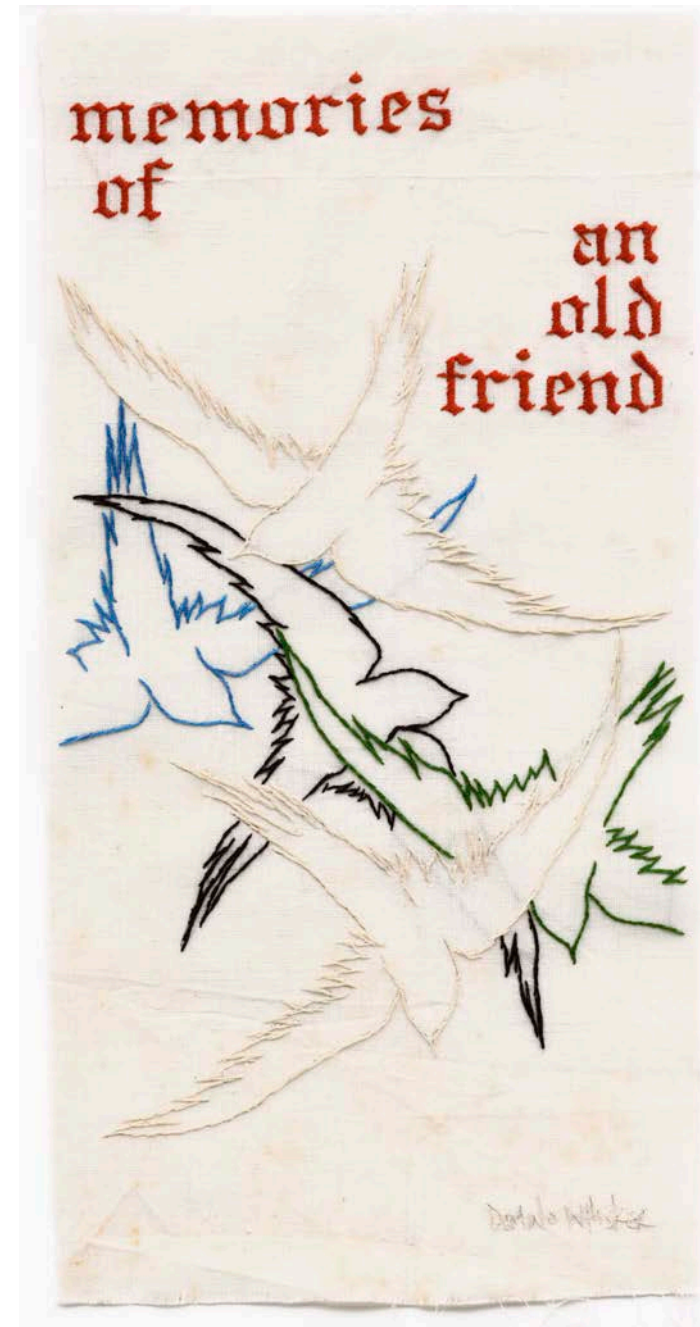
Another moment for the viewer  
to pause in the chaos, to  
remember, to slow down.



A Pause (for you)  
Hand Embroidery on Antique Linen  
50 x 34cm

## 'Memories of an Old Friend'

There is a sense of commotion in this piece. Birds in flight, swooping and diving - symbolising my never-ending thoughts, memories and ideas, that at times overwhelm me. Each bird represents an emotion, singularly they are calm but together chaotic.. Slowly slowly, my mantra allows me to focus on one thought in particular, in this piece I think of an old friend who's life was taken 10 years ago - his memory forever lives free like a bird in my heart.

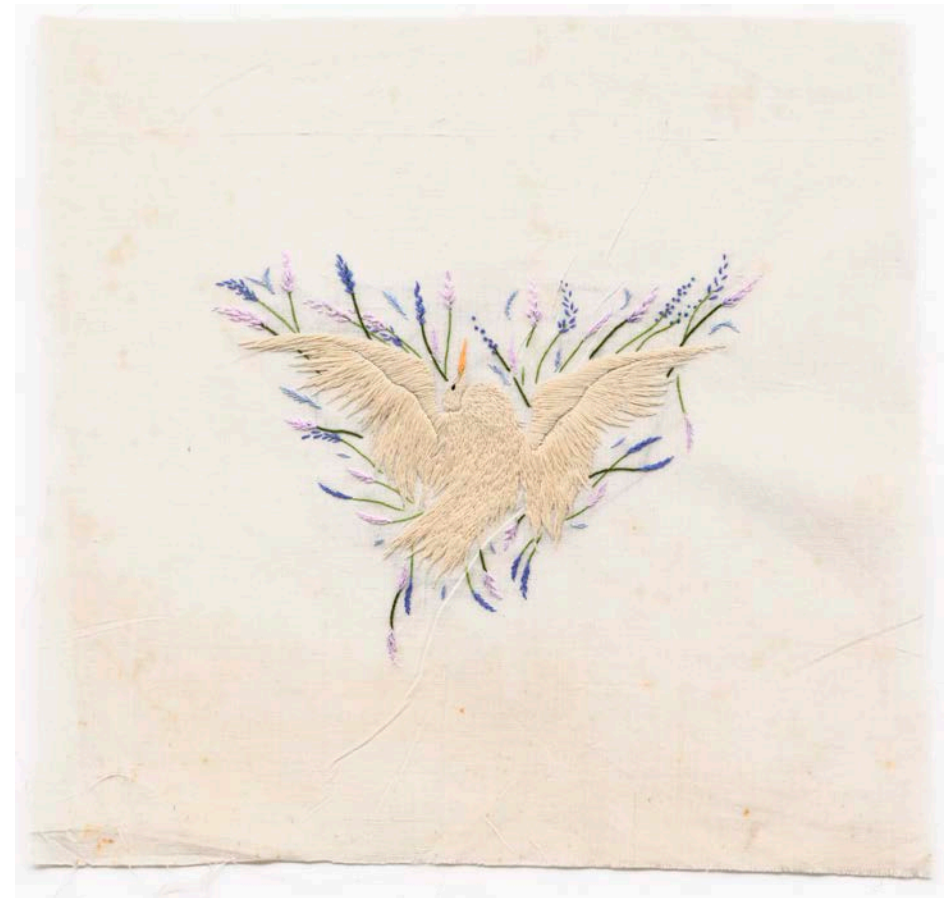


Memories of an Old Friend  
Hand Embroidery on Antique Linen  
50 x 30cm



## 'Man of the House'

The bird in this piece shows both strength and vulnerability. Wings outstretched and trying to take flight while tangled in a bed of lavender, which soothes and comforts him. Fragility on display, will he fight for life or give into his surroundings and let his body rest. This piece is in memory of my grandfather, who passed away in the Provence. When I think of him I smell lavender.



**Man of the House**  
Hand Embroidery on Antique Linen  
50 x 50cm



**Afterlife**  
Hand Embroidery on Canvas  
48 x 50cm

## 'Fallen Feathers'

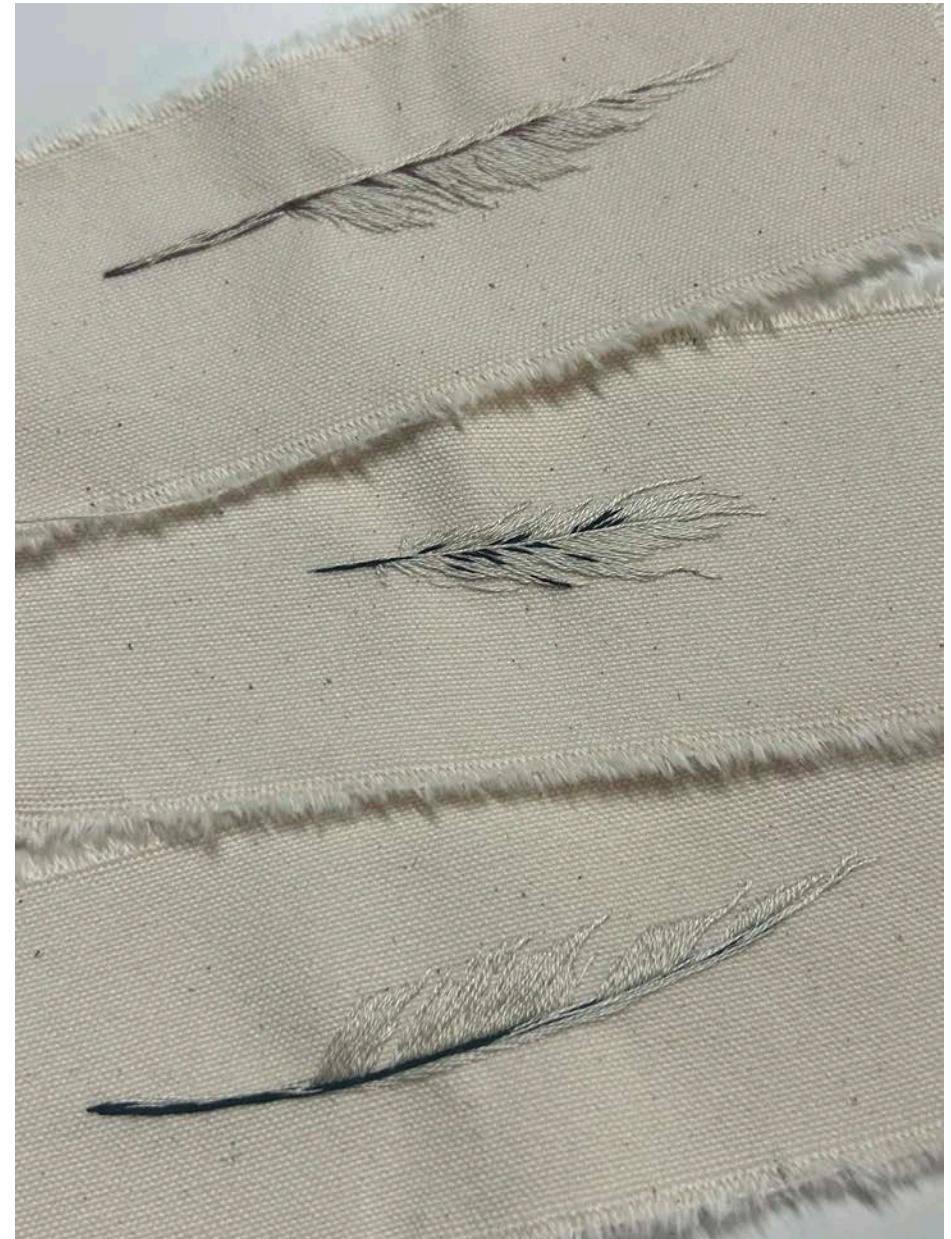
Many believe that finding a white feather is a message from a lost loved one.

When my father passed away, I took home every feather I found, in the hopes of building a whole new bird.

The spiritual symbolism of the feather was lost on me initially but later I became less desperate for a clear, undeniable message from Dad and instead found comfort in the simple beauty of these moments.

A single white feather, pure and weightless, was enough to remind me of him.

And somehow, that was enough.



**Fallen Feathers**  
5 hand embroidered feathers,  
individually framed  
Each are 42 x 30cm

## 'A Memory' (Birds 1 - 5)

I have always felt that I carry a small cemetery in my heart. Every loss I've experienced has profoundly shaped me, leaving an indelible mark. For years, the weight of these losses felt overwhelming, but through my work, I've discovered a way to memorialize them—not to let them go entirely, but to honour their existence.

I have found that recalling the essence of someone can momentarily feel like enough. There is an ambiguity to these birds. At first glance, they appear lifeless, though death is rarely so absolute. As I stitched these pieces, I questioned myself—was this too morbid? But once they were complete and together, they took on a new meaning. They felt different. Hopeful, enduring, and undeniably alive.



A Memory I  
Hand Embroidery on Antique Linen  
48 x 49cm



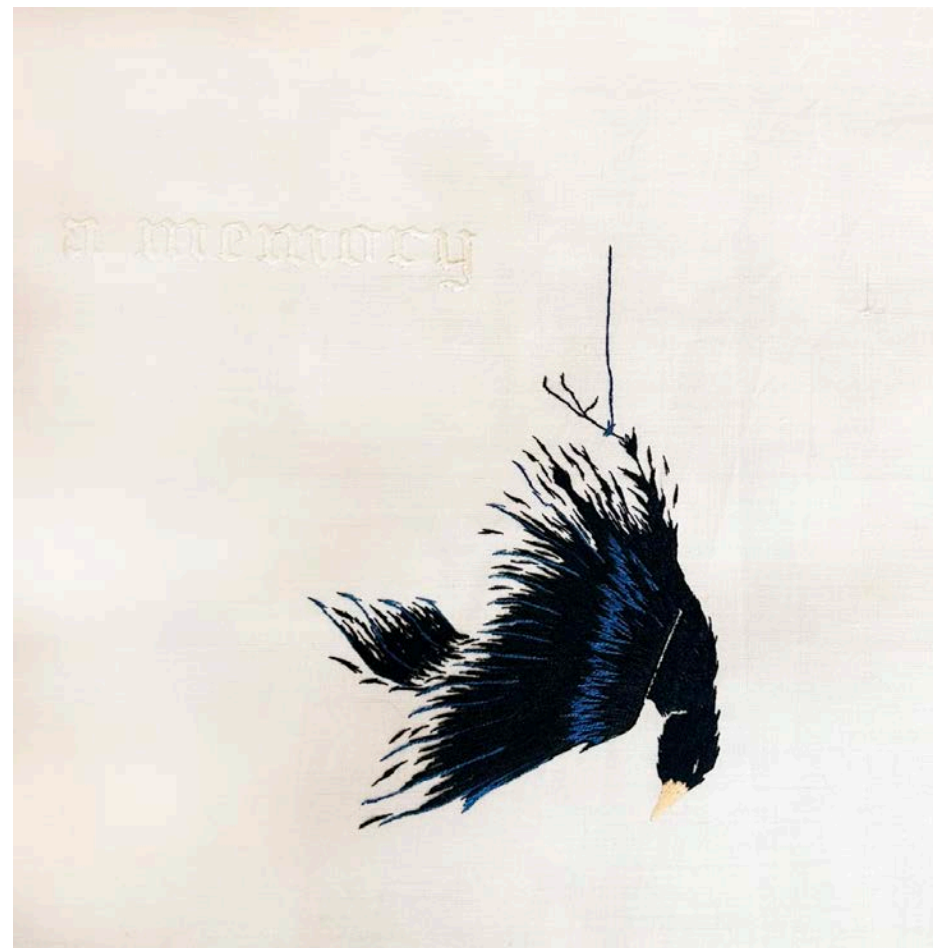
**A Memory II**  
Hand Embroidery  
on Antique Linen  
48 x 49cm



**A Memory III**  
Hand Embroidery  
on Antique Linen  
48 x 49cm



**A Memory V**  
Hand Embroidery on Antique Linen  
50 x 50cm



**A Memory V**  
Hand Embroidery on Antique Linen  
50 x 50cm



**Between Worlds I**  
Hand Tufted in 100% Wool  
90 x 70cm



**Between Worlds I**  
Hand Tufted in 100% Wool  
90 x 70cm



**Between Worlds III**  
Hand Tufted in 100% Wool  
90 x 70cm



**Between Worlds IV**  
Hand Tufted in 100% Wool  
90 x 70cm





Thinning of the Veil I  
Hand Tufted in 100% Wool  
90 x 70cm



Thinning of the Veil II  
Hand Tufted in 100% Wool  
90 x 70cm



Thinning of the Veil III  
Hand Tufted in 100% Wool  
90 x 70cm



Thinning of the Veil IV  
Hand Tufted in 100% Wool  
90 x 70cm



Heart Satcher I, II, III  
Hand Embroidery on Antique Linen  
Each are 35 x 34cm

# DOMINO WHISKER

Based in Dublin, self-taught artist Domino Whisker has spent the past decade using embroidery as a powerful medium for emotional expression and healing. Her journey began while caring for her father, who was diagnosed with early-onset Alzheimer's disease. What started as a cathartic outlet has evolved into a profound exploration of themes such as loss, grief, and the search for hope, as she navigates the complexities of life through her art.

Growing up in the vibrant atmosphere of Los Angeles, Domino draws inspiration from the sun-drenched landscapes, the vastness of the Pacific Ocean, and the cherished memories of her father's 1967 Chevy Impala. These elements weave into her work, reflecting a deep connection to her roots and the emotional landscapes she traverses.

In her recent endeavors, Domino has expanded her artistic expression to larger-scale, brightly colored tapestries. Often utilizing Irish wool, she creates immersive portals that invite spectators to escape into new, imaginary realms. Her use of geometric shapes and vivid colors transports the viewer, offering a respite from reality and a celebration of the beauty found within complexity.

Domino's work frequently addresses mental health, and she was honored with the RCSI Art Award for her significant contribution to the dialogue between art and healing. Her pieces have garnered praise for their intricate detail and emotional depth, seamlessly blending personal narrative with universal themes.

With a growing presence in the art world, Domino Whisker's work has been featured in prestigious exhibitions, including a recent solo show at Château La Coste in France. She continues to carve out a unique niche, captivating viewers and fostering connections through her art.

Design: Paul Donaghy  
Photography: Liadh Connolly



Gormleys.



471 Lisburn Road  
Belfast, BT9 7EZ  
+44 (0)28 9066 3313

27 Frederick St. South  
Dublin, D02 EP03  
+353 (0)1 6729031

[info@gormleys.ie](mailto:info@gormleys.ie)  
[gormleys.ie](http://gormleys.ie)